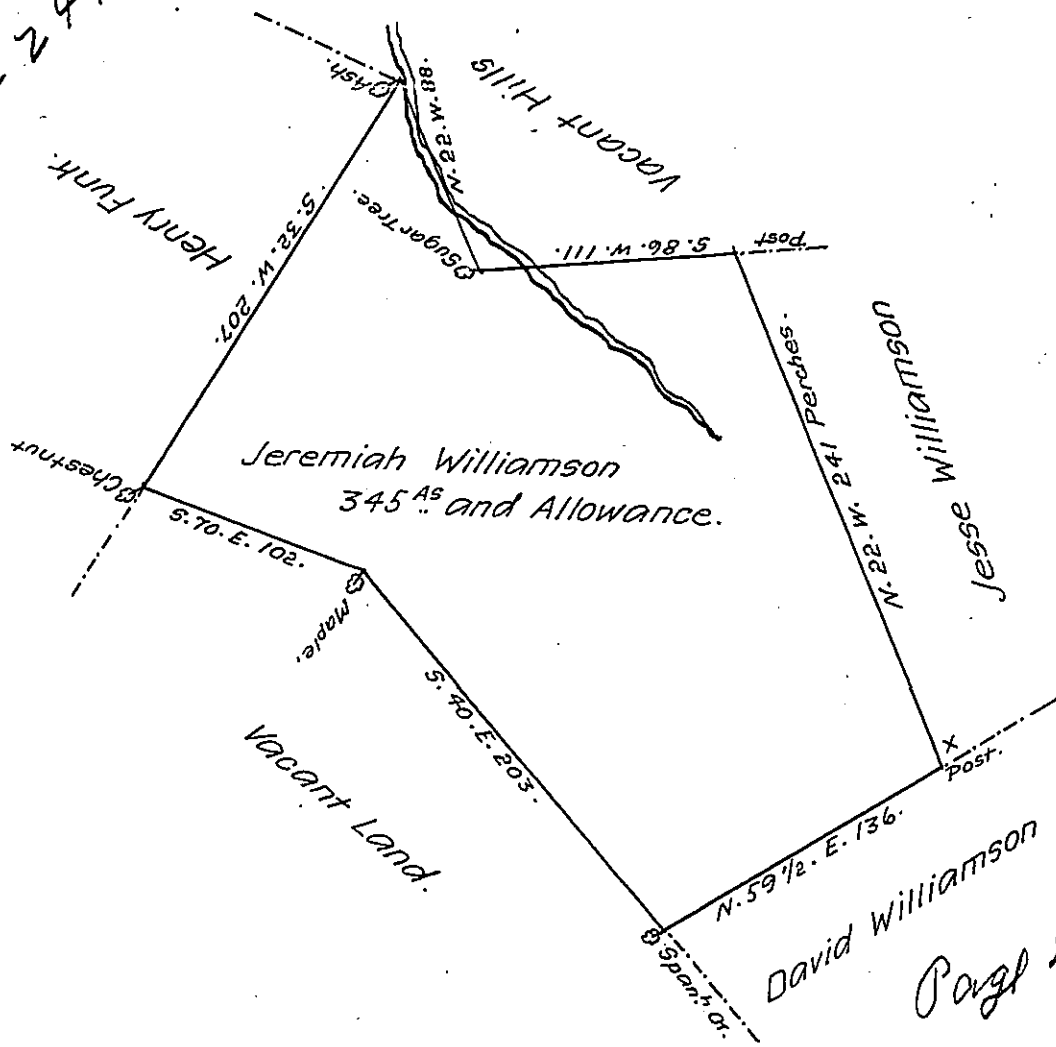


C-56-249



Page 2

A Draught of a Tract of Land called Deerfield situate on the head waters of a Run which empties into the Chest Creek adjoining Lands surveyed for David Williamson Jesse Williamson and Henry Funk lying north from Hart's Sleeping Place at the Distance of about three Miles in the County of Bedford Containing three hundred and forty five Acres and the usual Allowance of Six P. Cent for Roads &c. Surveyed the first Day of October 1773 for Jeremiah Williamson in pursuance of a Warrant granted to him Dated the fifth Day of August preceeding by

Thomas Smith D.S.

To John Lukens Esq.

Surveyor General of

Pennsylvania &c.

IN TESTIMONY that the above is a copy of the original remaining on file in the Department of Internal Affairs of Pennsylvania, made conformably to an Act of Assembly approved the 16th day of February 1833, I have hereunto set my hand and caused the Seal of said Department to be affixed at Harrisburg, this sixteenth day of May 1907.

Henry Howell  
Secretary of Internal Affairs.